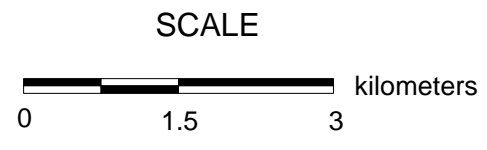


# RURAL MUNICIPALITY OF ELDON No. 471

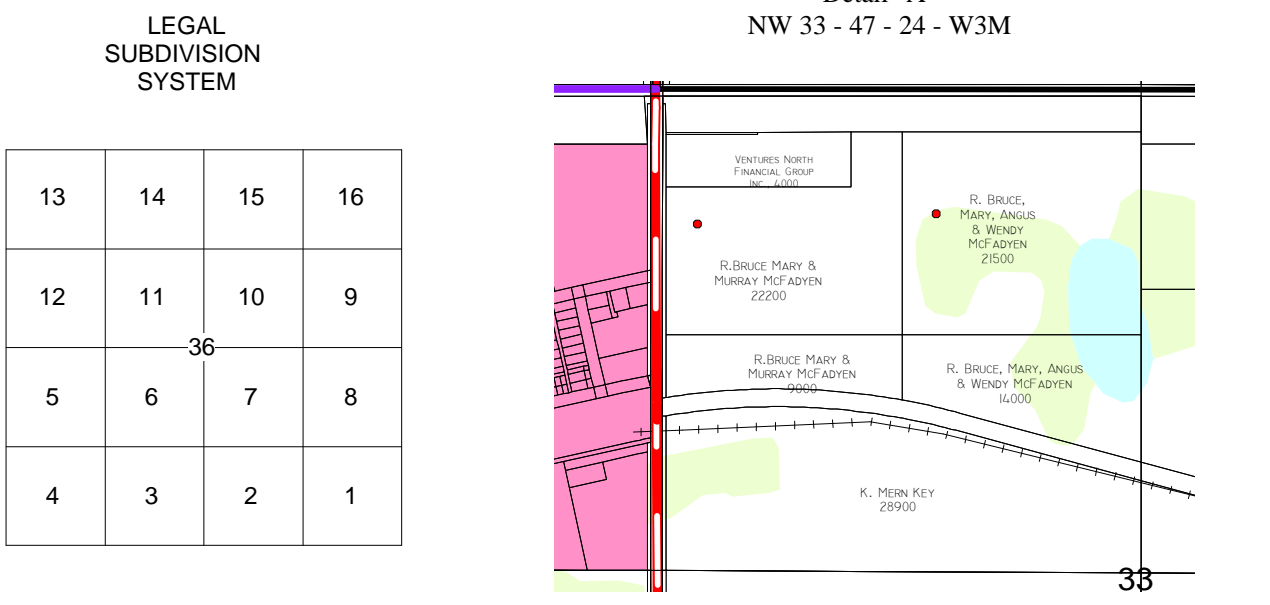
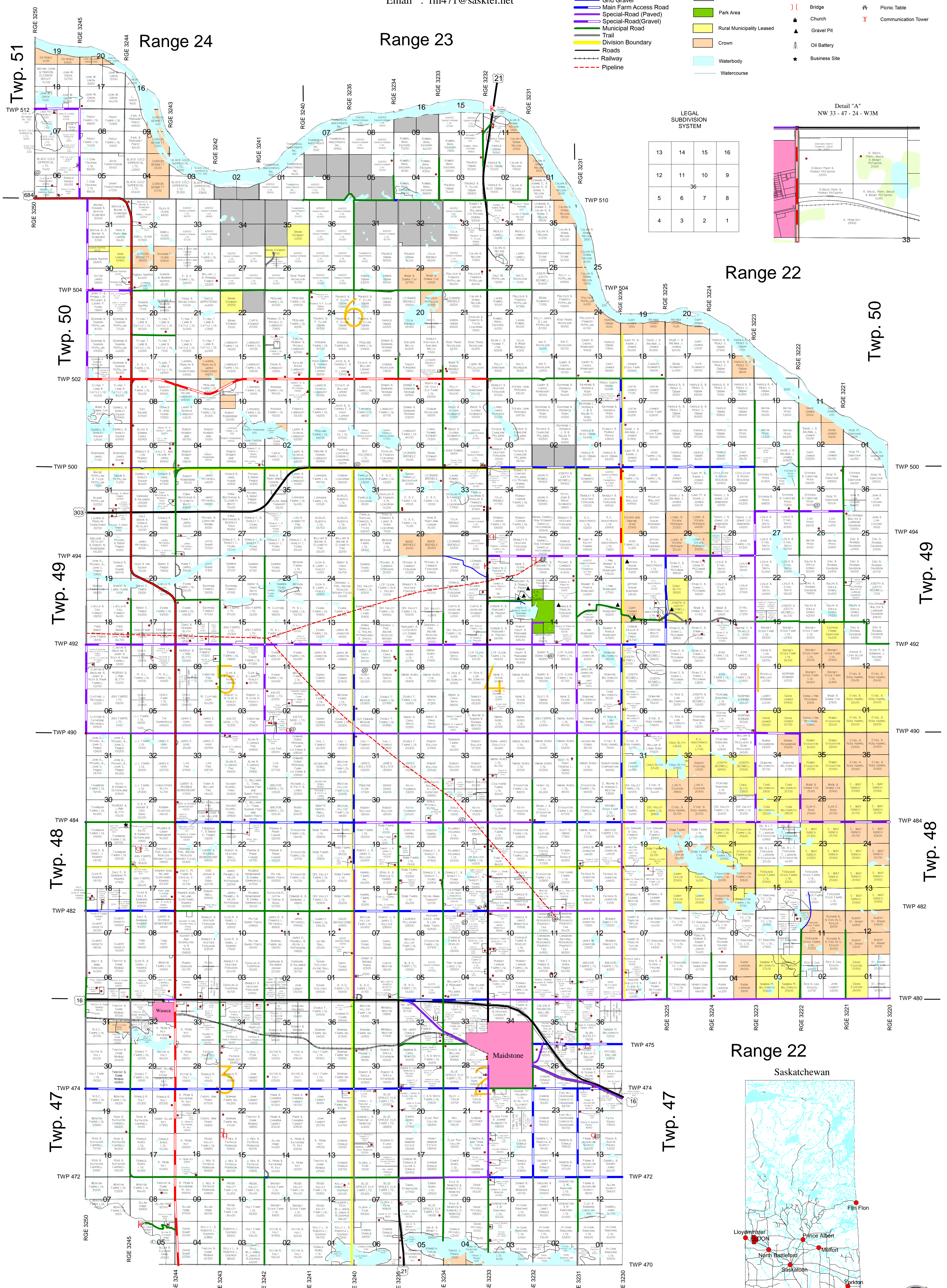
## West of The 3rd Meridian

Maidstone, Saskatchewan  
 Box 130, S0M 1M0  
 Phone : 893-2391  
 Fax : 893-4644  
 Email : rm471@sasktel.net



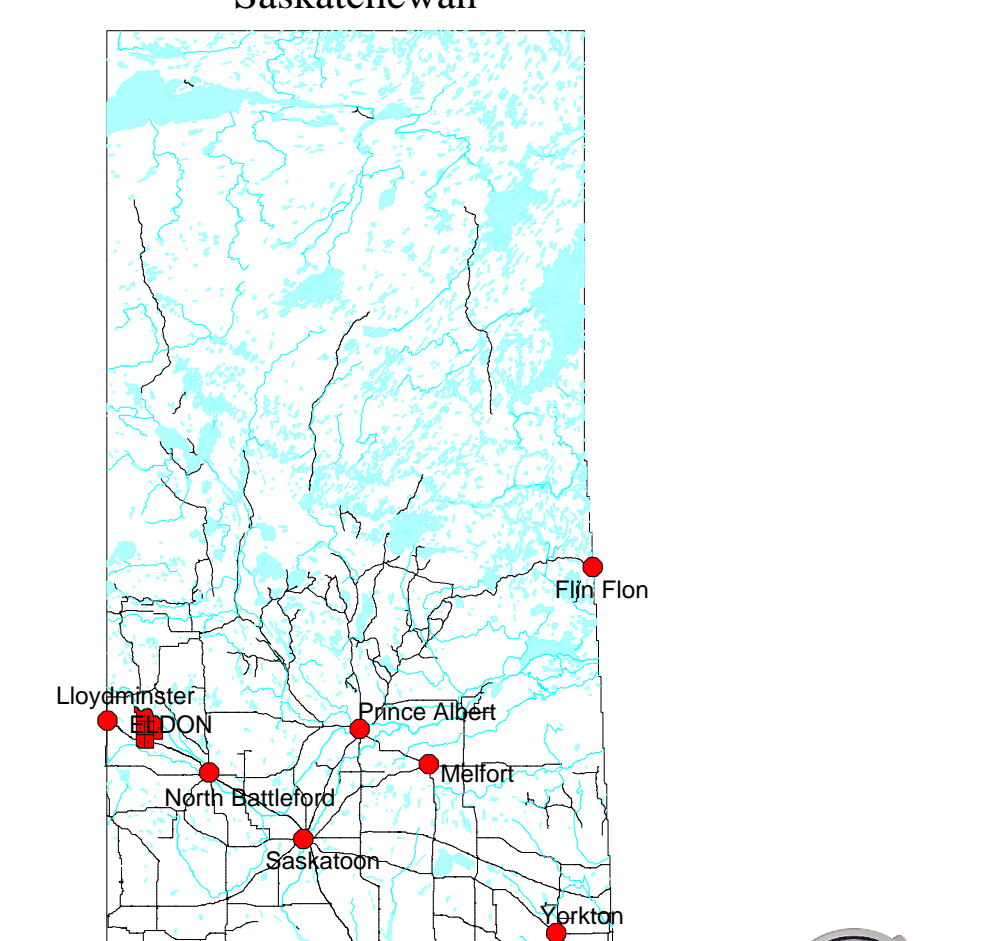
### Legend

- Provincial Highway
- Primary Grid Road (Paved)
- Primary Grid Road (Gravel)
- Grid Road
- Main Farm Access Road
- Special-Road (Paved)
- Special-Road (Gravel)
- Municipal Road
- Division Boundary
- Roads
- Railway
- Pipeline
- Urban Area
- Reserve
- Park Area
- Rural Municipality Leased
- Crown
- Waterbody
- Watercourse
- Cemetery
- Residence
- Bridge
- Church
- Gravel Pit
- Oil Battery
- Business Site
- Waste Collection Site
- Municipal Airstrip
- Picnic Table
- Communication Tower



### Range 22

### Range 22



Note:  
 This map has been produced by MuniSoft for the R.M. of Elton No. 471 using information supplied by owners.  
 Geospatial data and topographic data (Copyright Her Majesty the Queen in Right of Canada) have been provided by  
 Information Services Corporation of Saskatchewan for the production of this map under license to the municipality.  
 Duplication in whole or in part is prohibited. It is the responsibility of the user to verify the accuracy of the information  
 since changes in assessment, ownership and other information may have changed since the time of printing. E&OE  
 September 2015

